



Hills and Fleurieu Landscape Board

*Working together
to care for land, water and nature*

Michael Garrod

RGSSA Seminar
25 August 2023

The Landscape SA Story

**Hills and Fleurieu
Landscape Board
Business Plan**

2022 - 2023

Murraylands
and Riverland

Limestone
Coast

LANDSCAPE
SOUTH AUSTRALIA
HILLS AND FLEURIEU



The role of a landscape Board

To undertake, promote and integrate the management of natural resources within its region, with particular reference to;

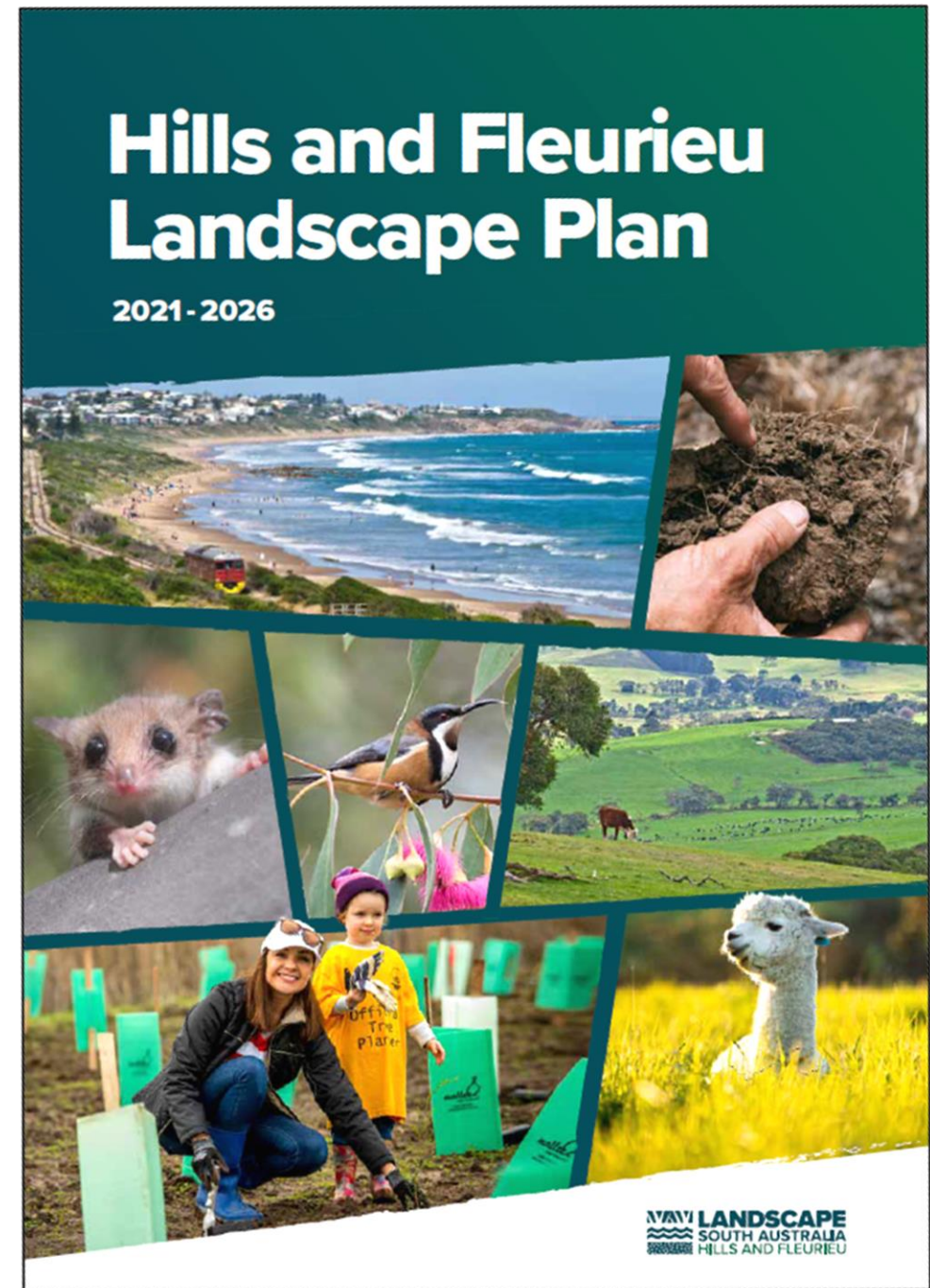
- ***land management,***
- ***water resource management, and***
- ***pest animal and plant control,***

...to build resilience in the face of change and to facilitate integrated landscape management and biodiversity conservation’.



Regional Landscape Plan

- Significant stakeholder and community input to set a strong vision and priorities for the region.
- Partnerships between the board, land managers, local government and community are key to achieving the plan's outcomes.





Vision

*A region inspired
to protect its uniquely
biodiverse and productive
landscapes into the future.*

In achieving this vision, we hope that the region will be an international exemplar – recognised for its resilient and beautiful landscapes, and cared for through whole-of-community stewardship.



Land

Regenerating biodiverse and highly productive landscapes



Water

Managing water resources sustainably



Nature

Conserving natural places, ecosystems and wildlife



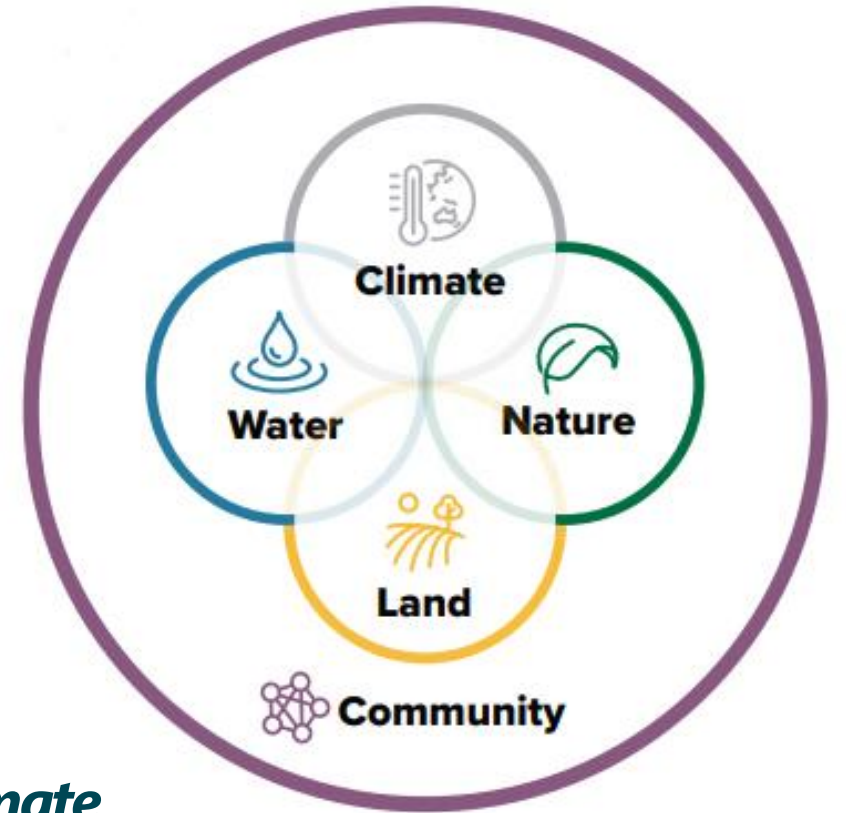
Climate

Becoming a carbon neutral and climate resilient region



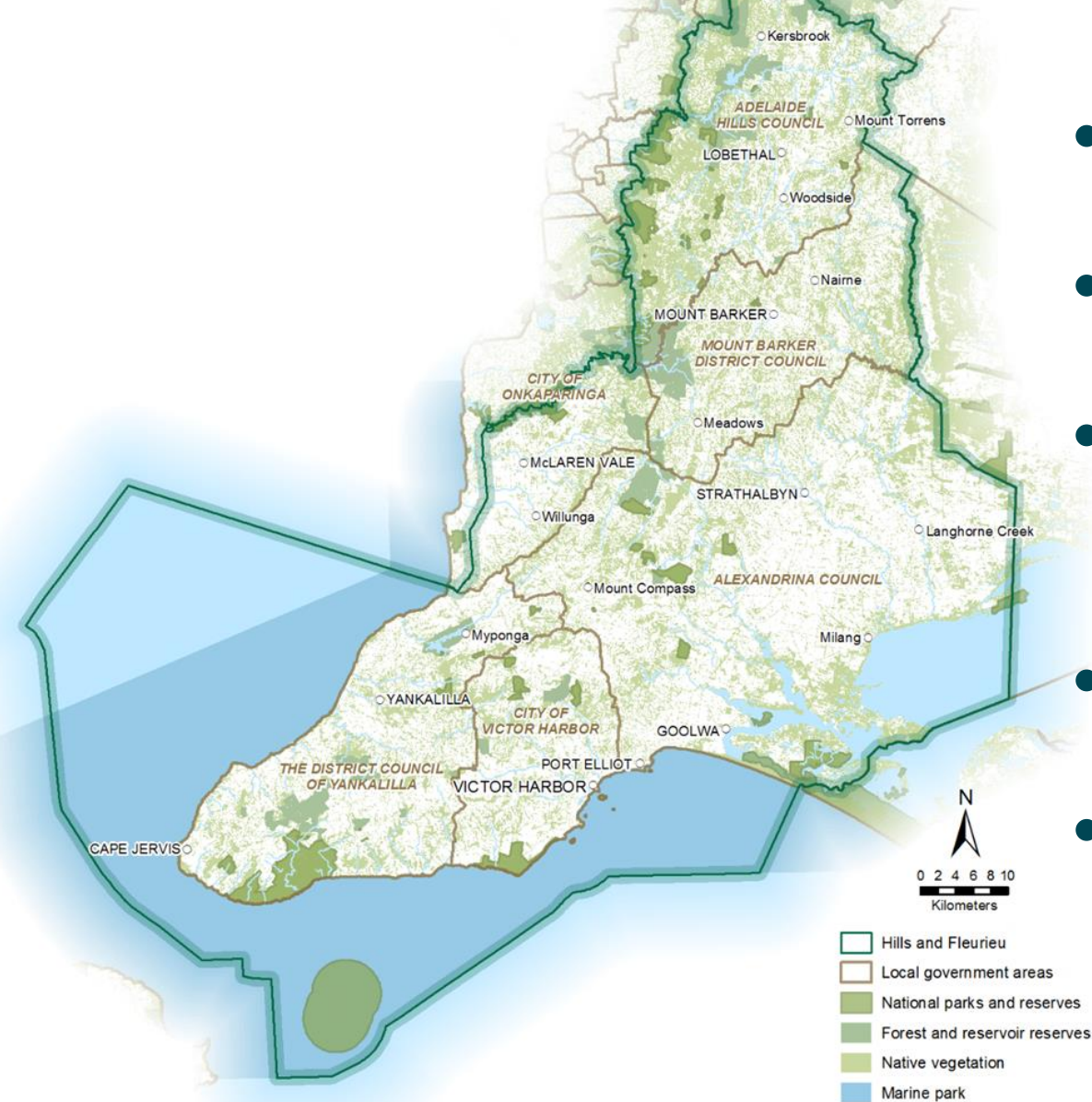
Community

Everyone caring for our landscapes

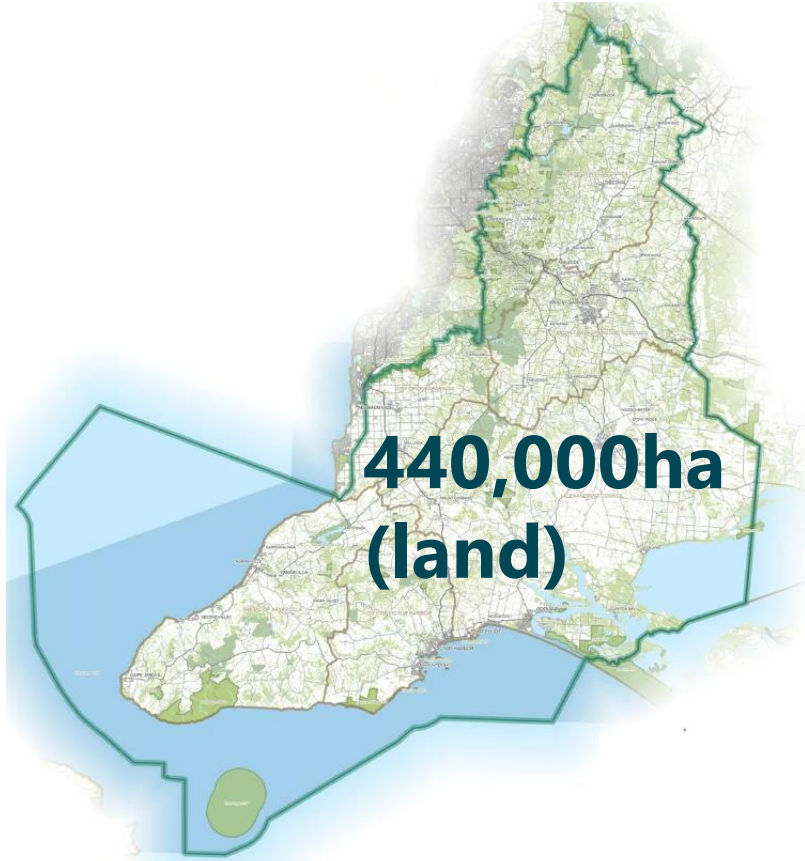


The Hills and Fleurieu Region

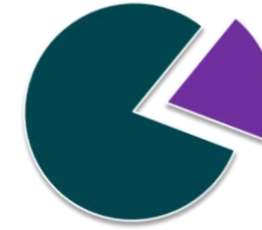
- 660,000 Ha in area
- 130,000 people – high growth
- One of Australia's 15 biodiversity hot spots
- Highly productive landscape
- First nations - Kaurna, Ngarrindjeri and Peramangk



Hills and Fleurieu region



Total **68,400**
land titles



20% live
outside
the region

Total **14,000**
private rural landholders
with properties

> 1ha own **375,000 ha**
of land

5,800 with
properties **> 10ha**

own **343,000 ha** of land

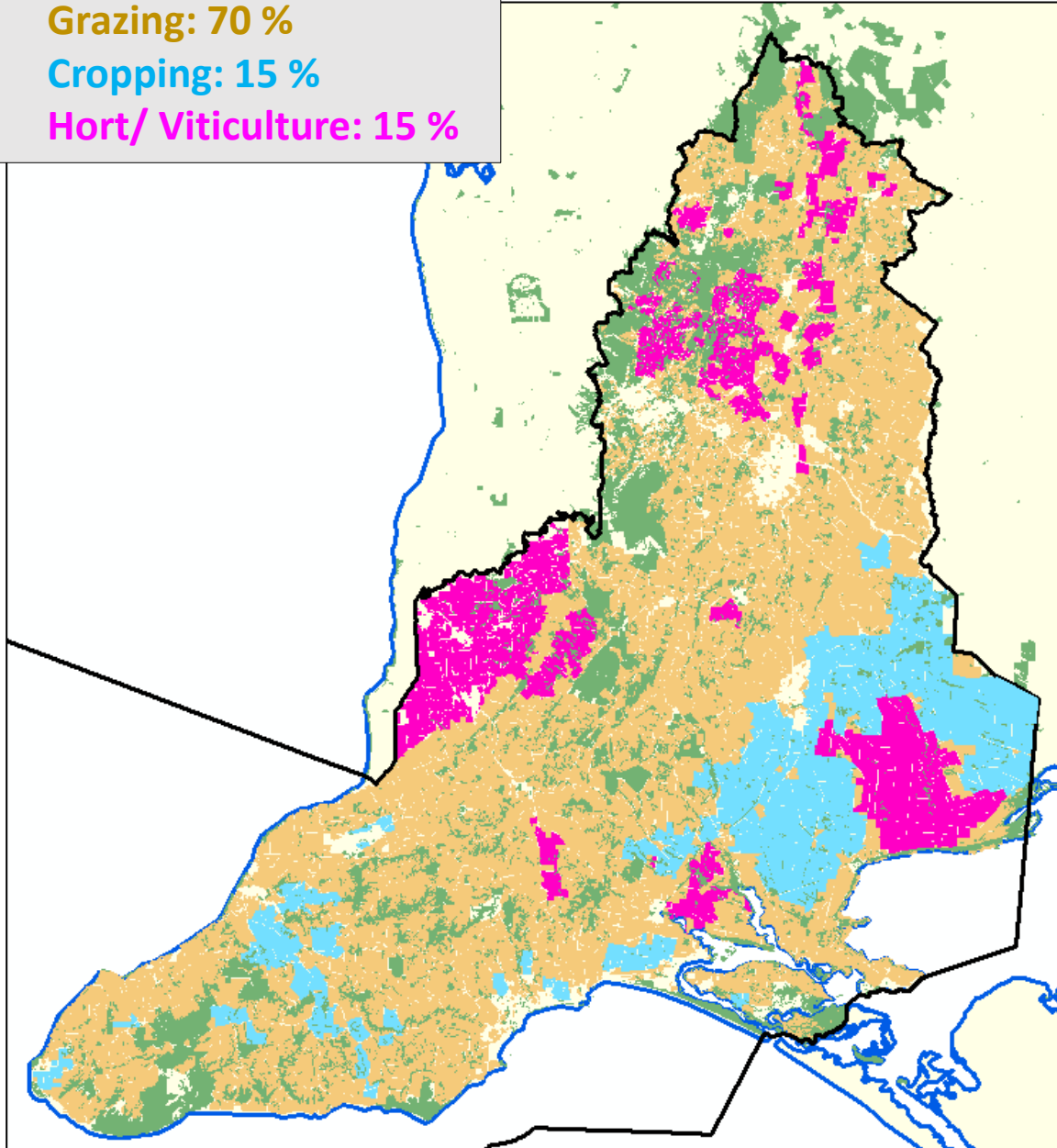
These 5,800 landholders own (and manage) 92% of the private land in the H&F

Agricultural land Use

Grazing: 70 %

Cropping: 15 %

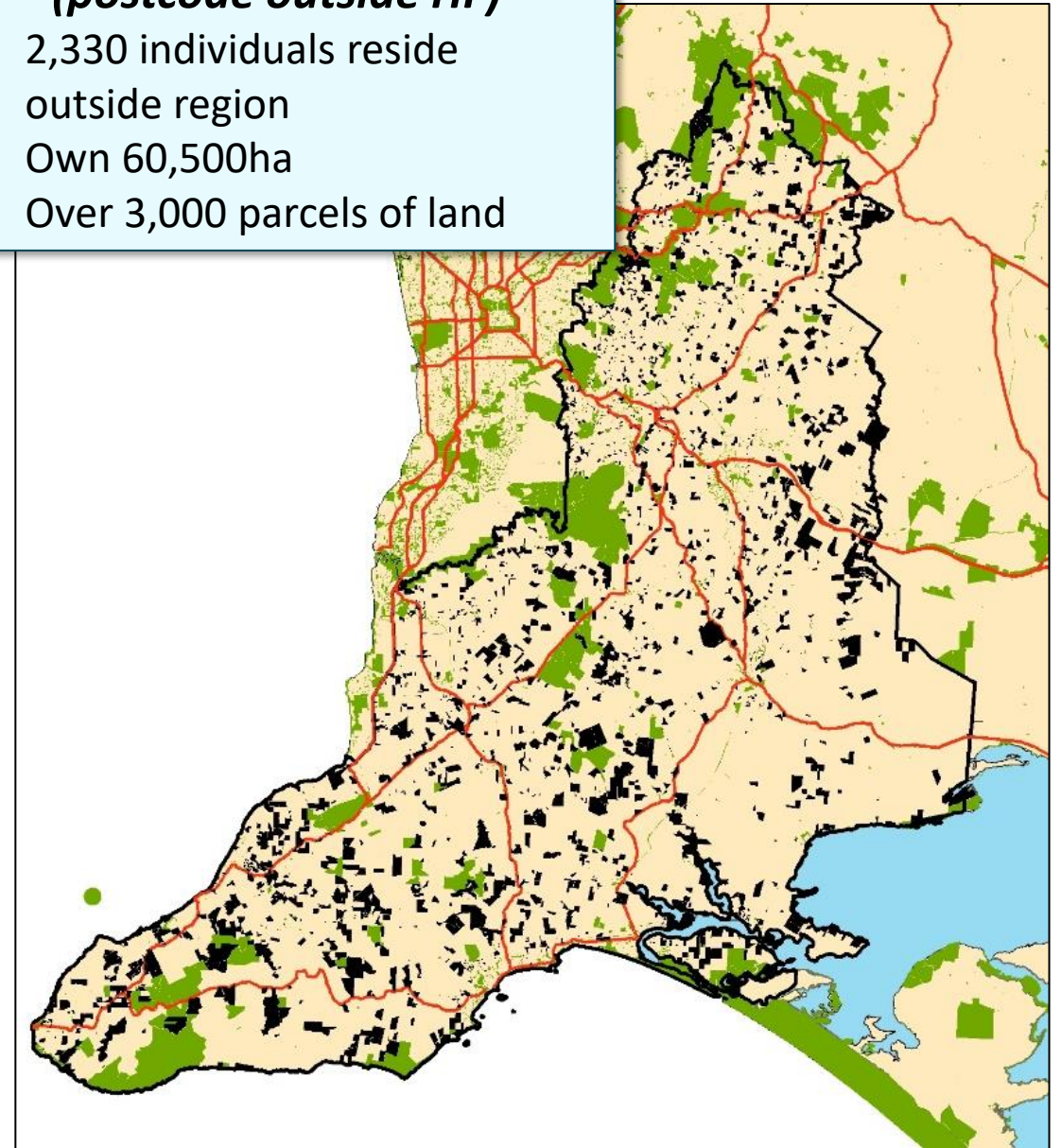
Hort/ Viticulture: 15 %



ABSENTEE

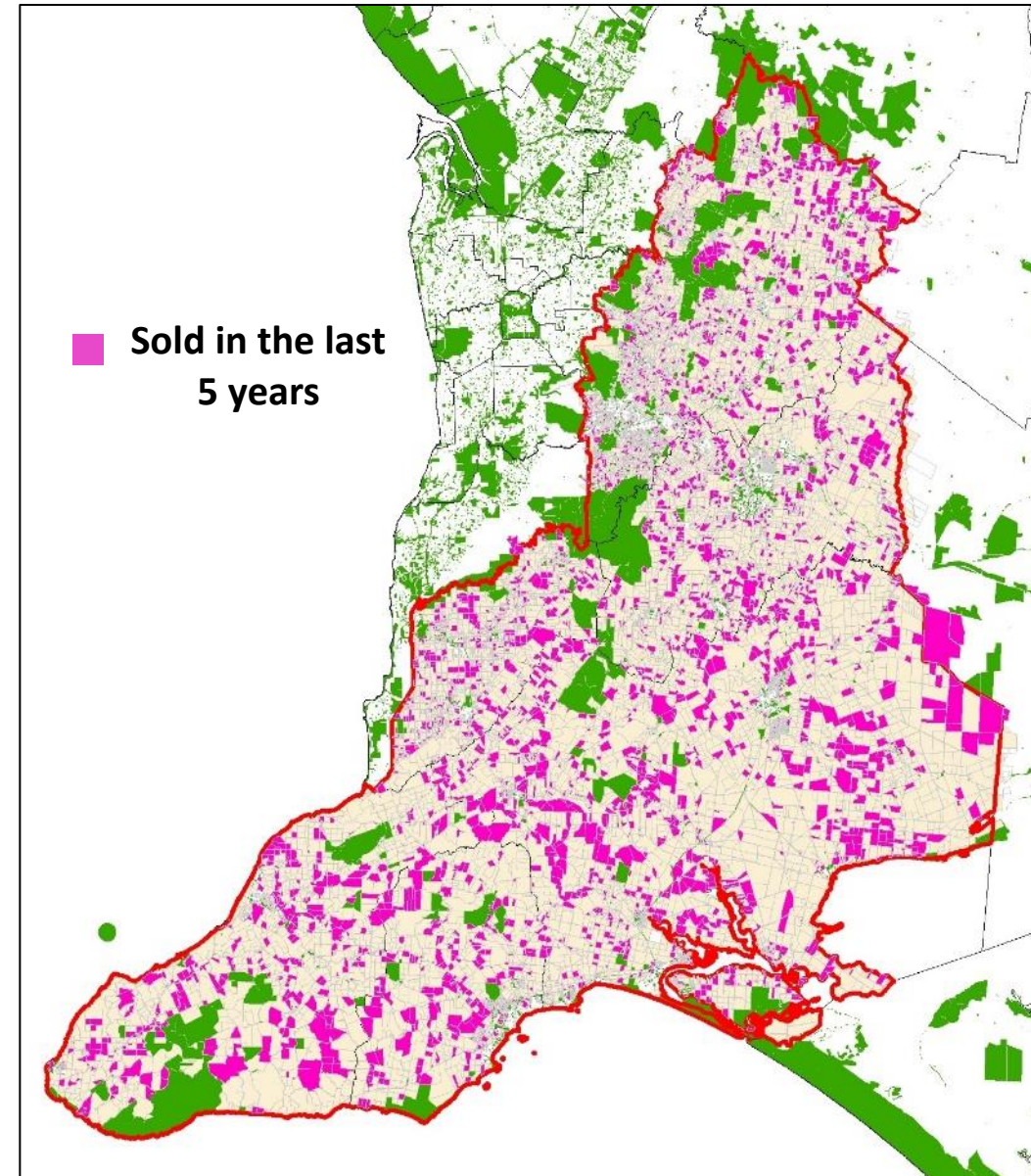
(postcode outside HF)

- 2,330 individuals reside outside region
- Own 60,500ha
- Over 3,000 parcels of land



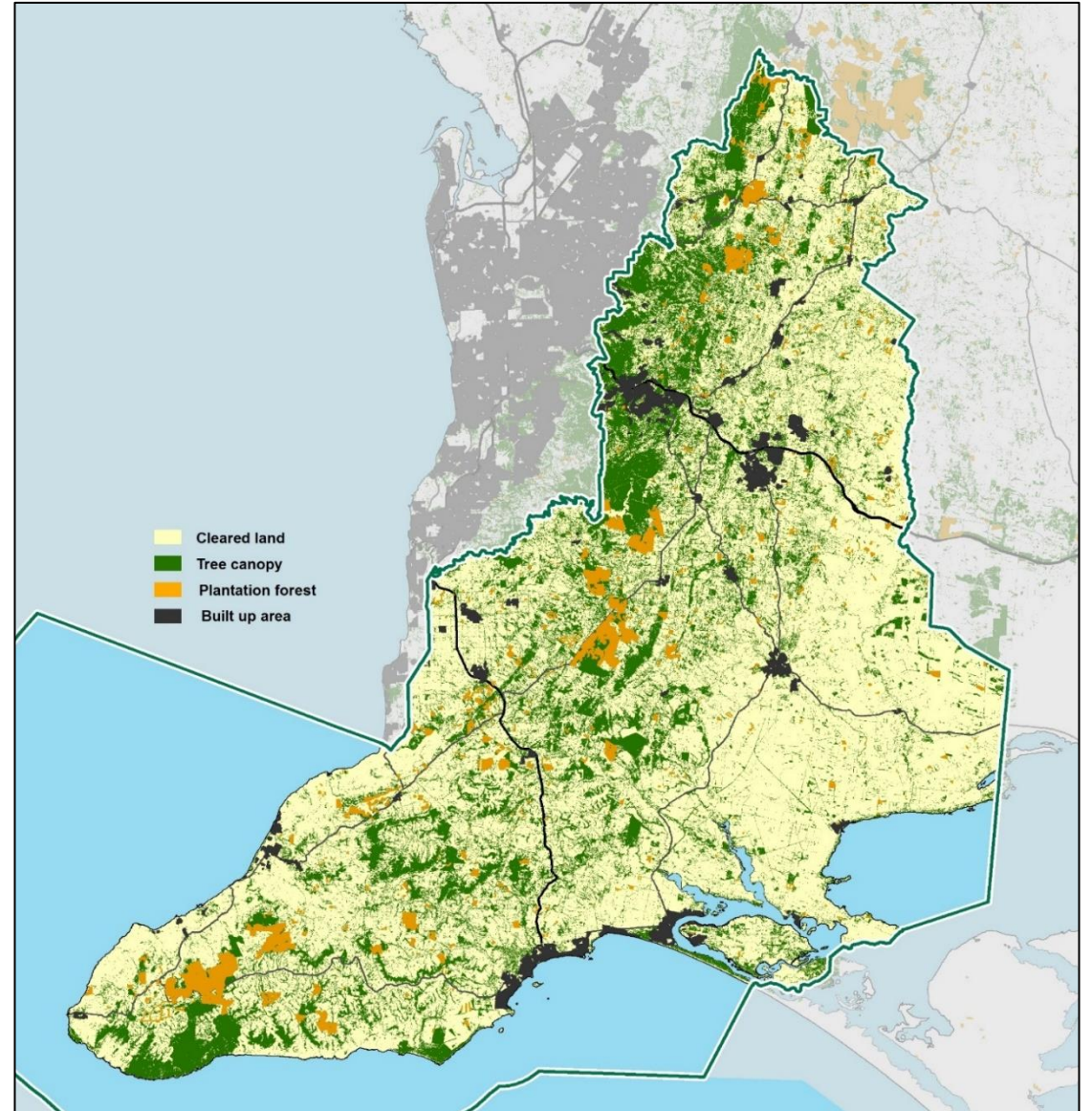
Turnover of rural land

- Median turnover = **9.6 years**
- **35-45%** of agricultural land in the region will change hands this decade



Landscape pressures

- Current vegetation cover 15-25%
- Remnant vegetation occurs as fragmented patches or linear strips, but scattered 'paddock' trees provide important habitat and connection
- Small patches vulnerable to other threats (small population sizes, pest and weed invasion, climate change)



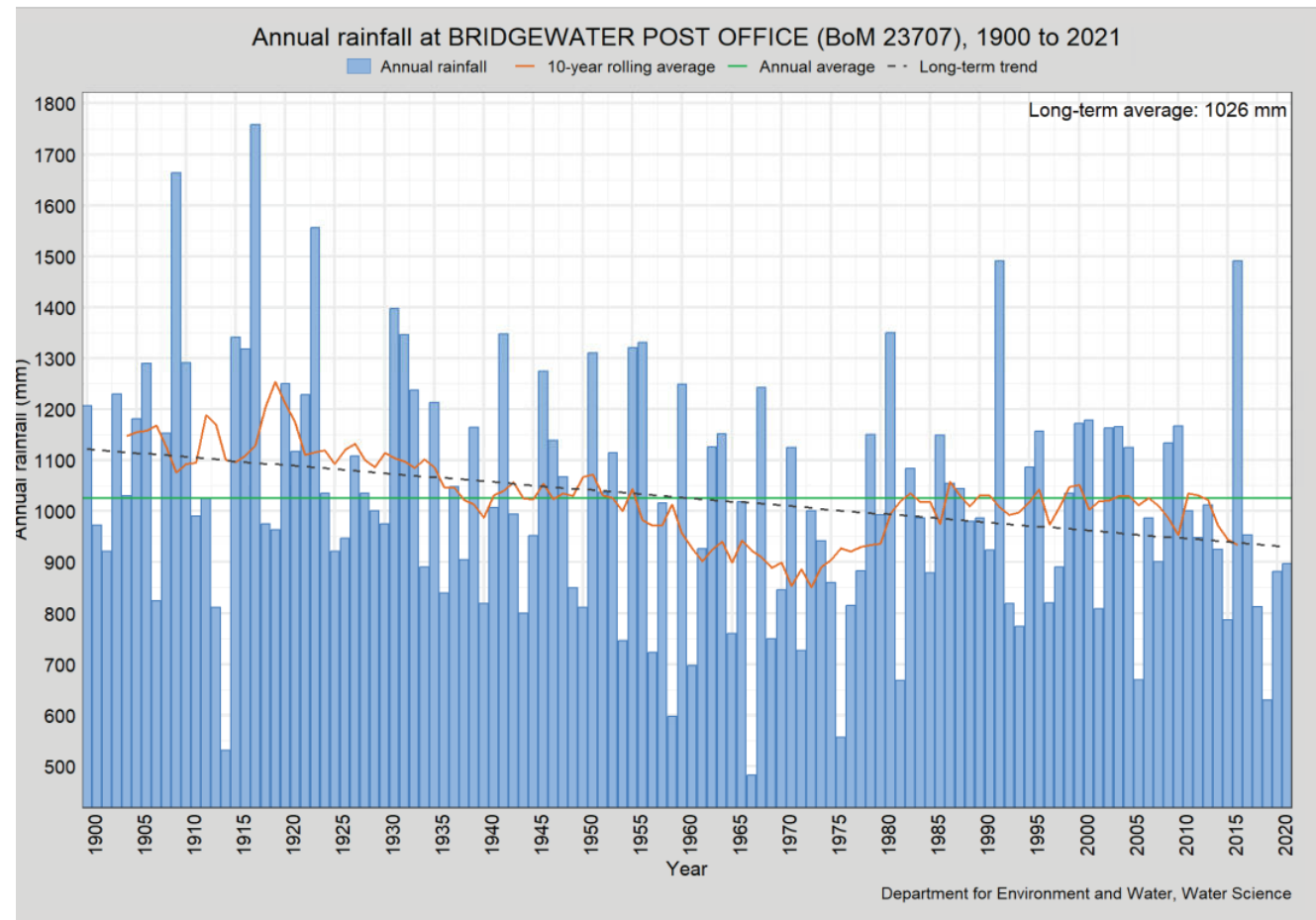
Climate change ... effects are being observed now

Trend of **declining rainfall** (1900-2021)
and **streamflow** (1974-2021) in the
Eastern and Western Mount Lofty Ranges

Projections suggest

- Hotter, drier future
- More extreme weather – heatwaves, storms, severe fire danger

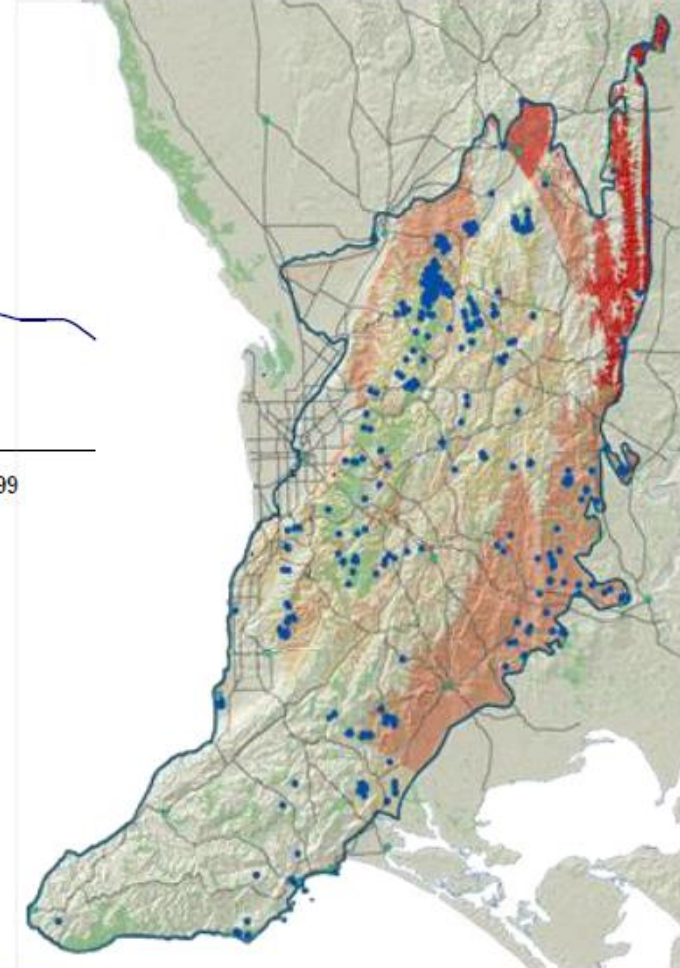
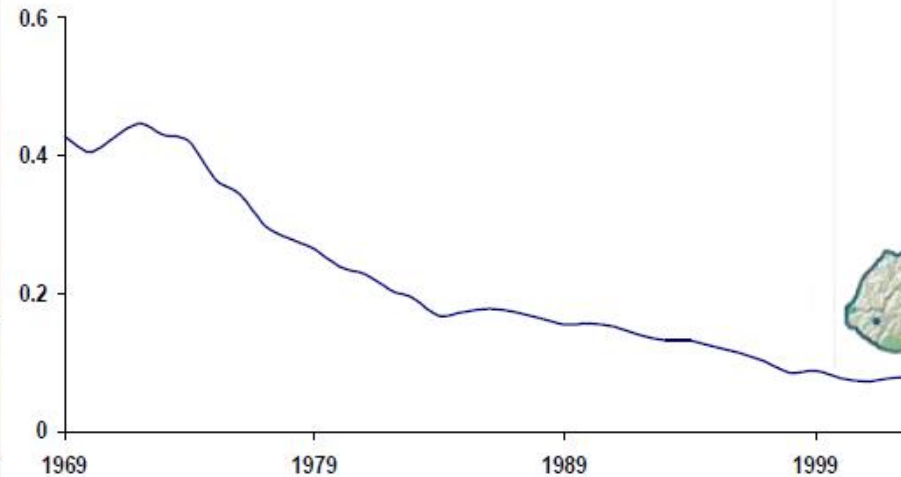
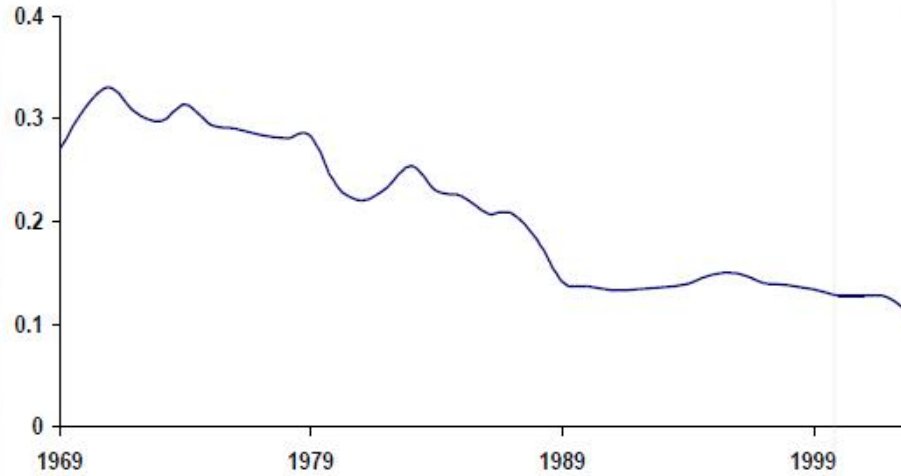
“By 2030, time spent in drought will nearly double in the Hills and Fleurieu”



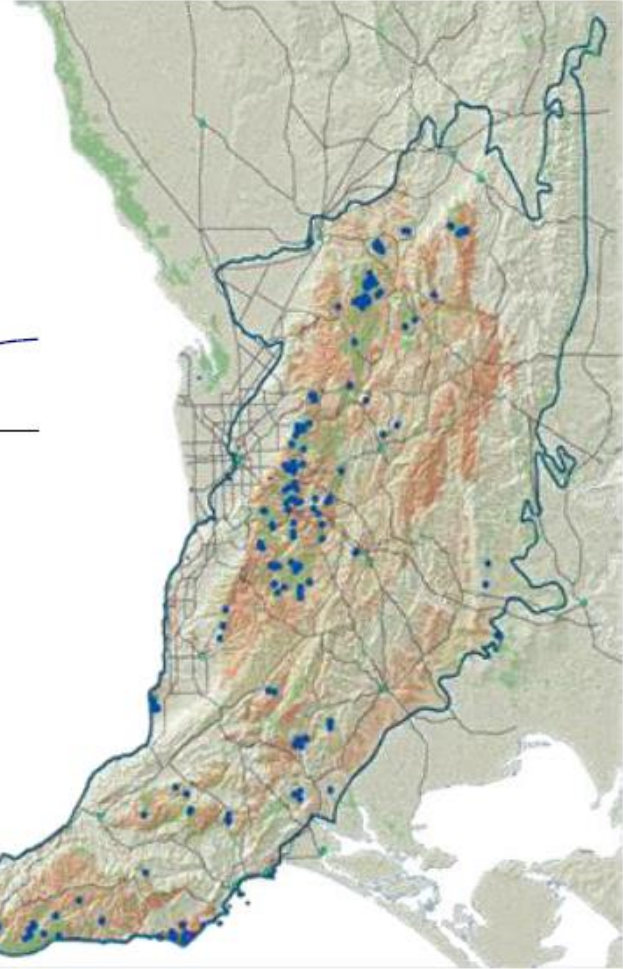
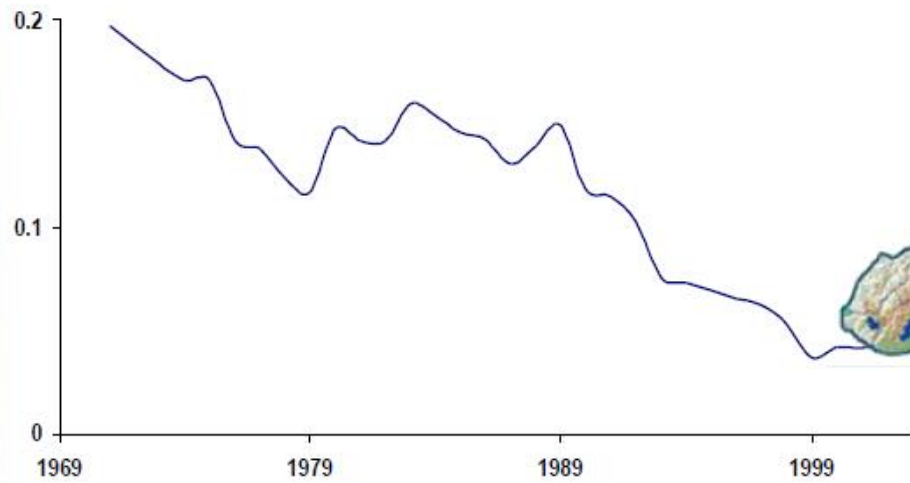
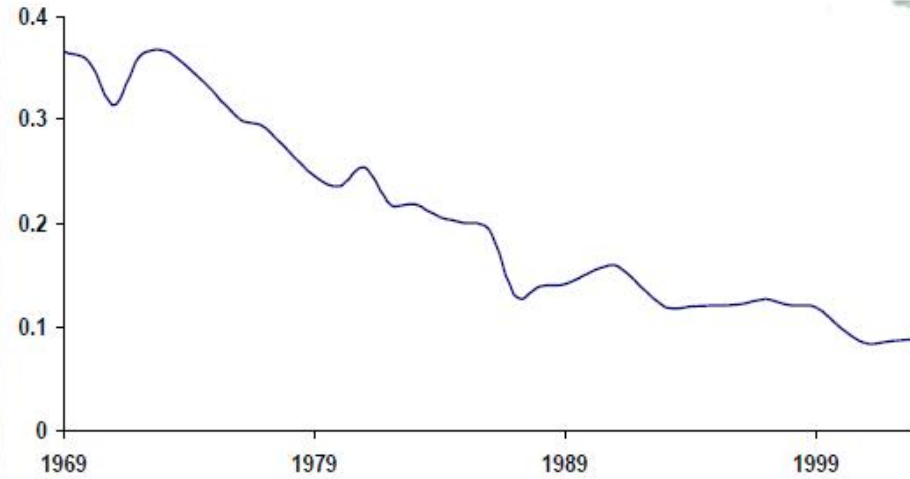
^ Under emissions scenarios RCP4.5 & RCP8.5)

Region in extinction debt

Birds in decline - Grassy woodland response group

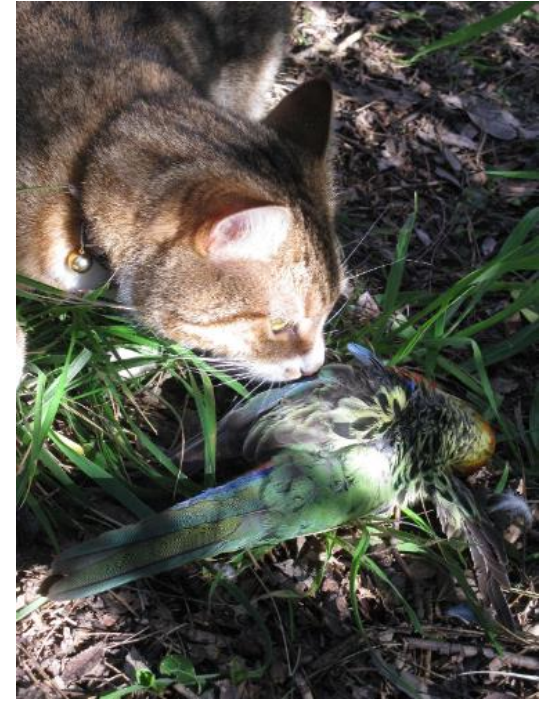


Birds in decline - Heathlands response group



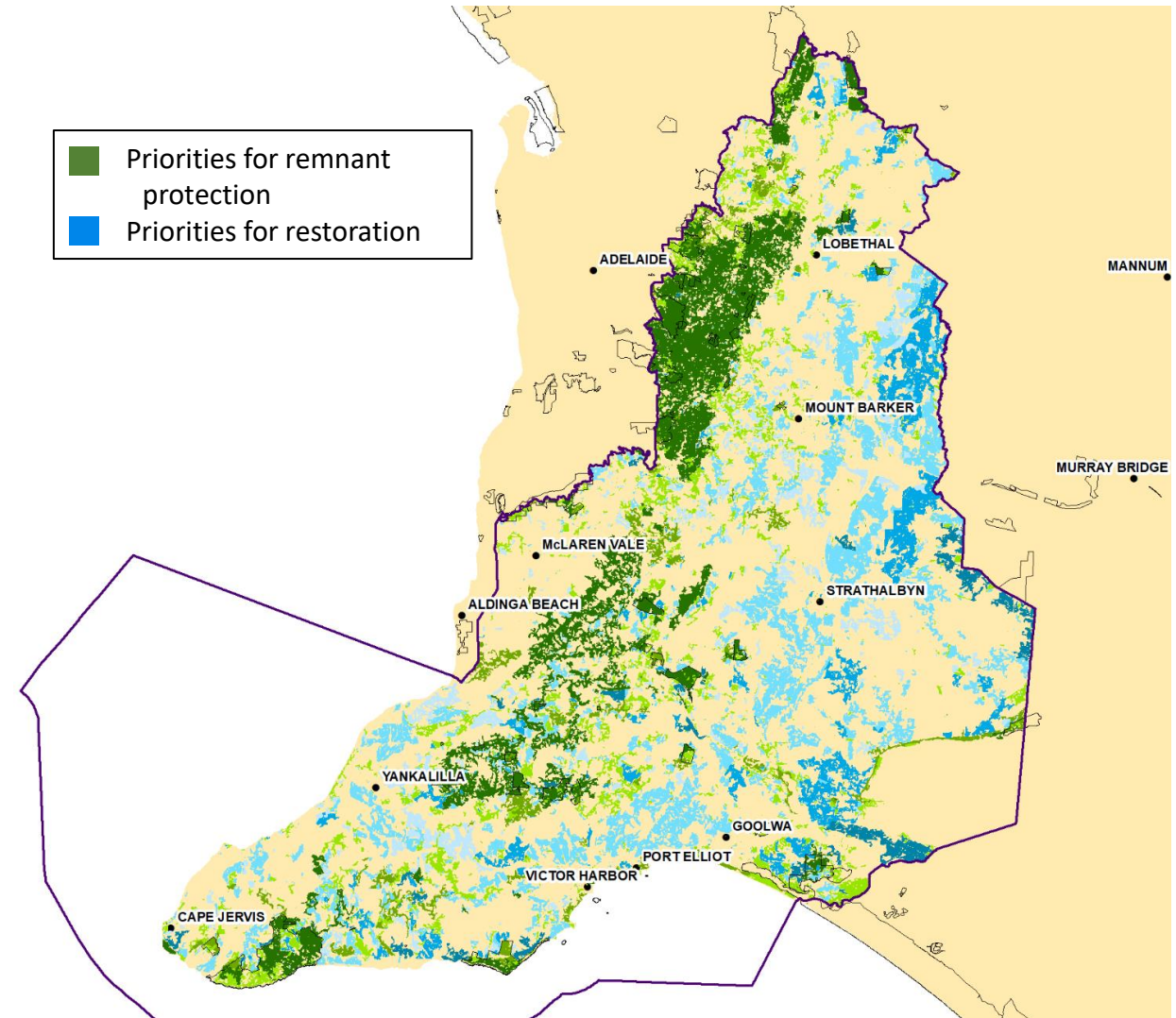
Urbanisation – Additional pressures

- Loss of mature trees and hollows
- Stormwater runoff
- Pet impacts on wildlife
- Aggressive, common species push out other species (e.g. Noisy miner)
- Urban interface – increased fire risk to people, increased threat to biodiversity from asset protection zones



Landscape restoration priorities

Protecting only what is left...
is not enough!





Thank-you.
Q&A



Our new stewardship program

*Stewardship:
'the careful and responsible management of
something entrusted to one's care'*

Program goal

To support land managers to be the best stewards they can be, embracing their role in caring for land, water and nature.






Our Sources of funding

Funding source	2023-24 (\$)
Landscape and water levies ¹	
Regional landscape levy	5,647,100
Water levy	2,423,300
External funding ²	893,900
TOTAL REVENUE	8,964,300
Other funding (carry-over)	3,065,100
TOTAL FUNDING	12,029,400

Regional landscape and water levies

- Landscape levies collected by constituent Councils on behalf of landscape boards.
- H&F landscape Levy based on the capital value of land.
- Water Levy raised through the DEW Water Licensing.
- Historically higher levy in SAMDB NRM region than in AMLR NRM region.
- In 2023-24, equalising the landscape levy so everyone pays the same rate across the region.

Program investment

Priority	Landscape and water levies (\$)	External funding (\$)
 Land	2,175,700	377,300
 Water	4,080,700	0
 Nature	1,279,300	997,900
 Climate	1,014,800	0
 Community	2,038,700	65,000
Total expenditure	10,589,200	1,440,200