

# The Adelaide Hills Under Pressure



**Sophie Thomson, Hills Girl**


# Challenges

- Climate Change
- Urban Heat Island Effect
- Lack of Urban Habitat
- Unsustainable Development
  - urban sprawl and urban infill
- Food Insecurity
- Lack of community and social connections

# Climate

[Bureau Home](#) > [Australia](#) > [South Australia](#) > [Forecasts](#) > [Adelaide Forecast](#)

## Adelaide Forecast

 View the current warnings for South Australia

Forecast issued at 4:10 pm CDT on Wednesday 29 December 2021.

### Forecast for the rest of Wednesday

 <b>Clear.</b>	<b>Adelaide area</b> Clear. Winds southeasterly 25 to 35 km/h, reaching 35 to 45 km/h about the hills and southern suburbs.
Chance of any rain: <b>0%</b> <input type="checkbox"/>	
Sun protection recommended from 8:50 am to 5:30 pm, UV Index predicted to reach 12 [Extreme]	

### Thursday 30 December

 Min <b>19</b> Max <b>36</b> <b>Sunny.</b>	<b>Adelaide area</b> Sunny. Winds east to southeasterly 25 to 35 km/h, reaching 35 to 45 km/h about the hills and southern suburbs early in the morning. Winds shifting northeast to northwesterly 15 to 20 km/h in the morning then tending west to southwesterly in the early afternoon and southeasterly in the evening.
Chance of any rain: <b>0%</b> <input type="checkbox"/>	

**Fire Danger** | Mount Lofty Ranges: Very High  
Adelaide Metropolitan: High

Sun protection recommended from 8:50 am to 5:30 pm, UV Index predicted to reach 12 [Extreme]


### Friday 31 December

 Min <b>21</b> Max <b>38</b> <b>Very hot and sunny.</b>	<b>Adelaide area</b> Very hot and sunny. Winds northeast to southeasterly 15 to 25 km/h tending north to northwesterly 20 to 30 km/h in the morning then tending southeast to southwesterly 15 to 25 km/h in the late afternoon.
Chance of any rain: <b>0%</b> <input type="checkbox"/>	

Sun protection recommended from 8:50 am to 5:30 pm, UV Index predicted to reach 12 [Extreme]

[Bureau Home](#) > [Australia](#) > [South Australia](#) > [Forecasts](#) > [Mount Barker Forecast](#)

## Mount Barker Forecast


 View the current warnings for South Australia

Forecast issued at 4:15 pm CDT on Wednesday 29 December 2021.

### Forecast for the rest of Wednesday

 <b>Clear.</b>	<b>Clear.</b> Winds southerly 20 to 30 km/h becoming light in evening.
Chance of any rain: <b>0%</b> <input type="checkbox"/>	
Sun protection recommended from 8:50 am to 5:30 pm, UV Index predicted to reach 12 [Extreme]	


### Thursday 30 December

 Min <b>14</b> Max <b>36</b> <b>Sunny.</b>	<b>Sunny.</b> Light winds becoming northwest to northeasterly 15 to 25 km/h in the morning then tending south to southwesterly 15 to 20 km/h in the early afternoon.
Chance of any rain: <b>0%</b> <input type="checkbox"/>	

**Fire Danger - Very High**

Sun protection recommended from 8:50 am to 5:30 pm, UV Index predicted to reach 12 [Extreme]

### Friday 31 December

 Min <b>18</b> Max <b>39</b> <b>Very hot and sunny.</b>	<b>Very hot and sunny.</b> Winds east to northeasterly 15 to 25 km/h turning north to northwesterly 20 to 30 km/h in the morning then tending southeast to southwesterly 15 to 25 km/h in the late afternoon.
Chance of any rain: <b>0%</b> <input type="checkbox"/>	

Sun protection recommended from 8:50 am to 5:30 pm, UV Index predicted to reach 12 [Extreme]

### Saturday 1 January

# The Solution?

Plants.....  
& Gardens

*How does your  
garden rate?*

## 5 STAR GARDEN RATING



COOL



LIVABLE



HABITAT HAVEN



SUSTAINABLE



PRODUCTIVE



# 5 STAR GARDEN RATING

- COOL
- LIVABLE
- HABITAT HAVEN
- SUSTAINABLE
- PRODUCTIVE



## 5 STAR GARDEN RATING



COOL



LIVABLE



HABITAT HAVEN



SUSTAINABLE



PRODUCTIVE



**5 STAR  
GARDEN  
RATING**

~~X~~ COOL

~~X~~ LIVABLE

~~X~~ HABITAT HAVEN

~~X~~ SUSTAINABLE

~~X~~ PRODUCTIVE



**5 STAR  
GARDEN  
RATING**



*COOL*



*LIVABLE*



*HABITAT HAVEN*



*SUSTAINABLE*



*PRODUCTIVE*



# 5 STAR GARDEN RATING



COOL



LIVABLE



HABITAT HAVEN



SUSTAINABLE



PRODUCTIVE



# Plant Trees .....

# and protect those we have got!



# Possibilities

- Private Land
- Public Land
- Community Gardens
- Urban Farms

# Microclimate

- Shade
- Shelter
- Reducing unnecessary hot reflective surfaces
- Reducing radiant heat



# Microclimate: Shade



# Microclimate: Shade



# Microclimate: Shelter

Using windbreaks, hedges or climbing plants



# Microclimate

Reduce unnecessary hot reflective surfaces





# Microclimate

## Reducing radiant heat



# Microclimates and lawns

- Rationalise unnecessary large areas
- Maximise effectiveness and usefulness
- Choose drought tolerant varieties
- Avoid synthetic turf



# Public Space



# Community Gardens

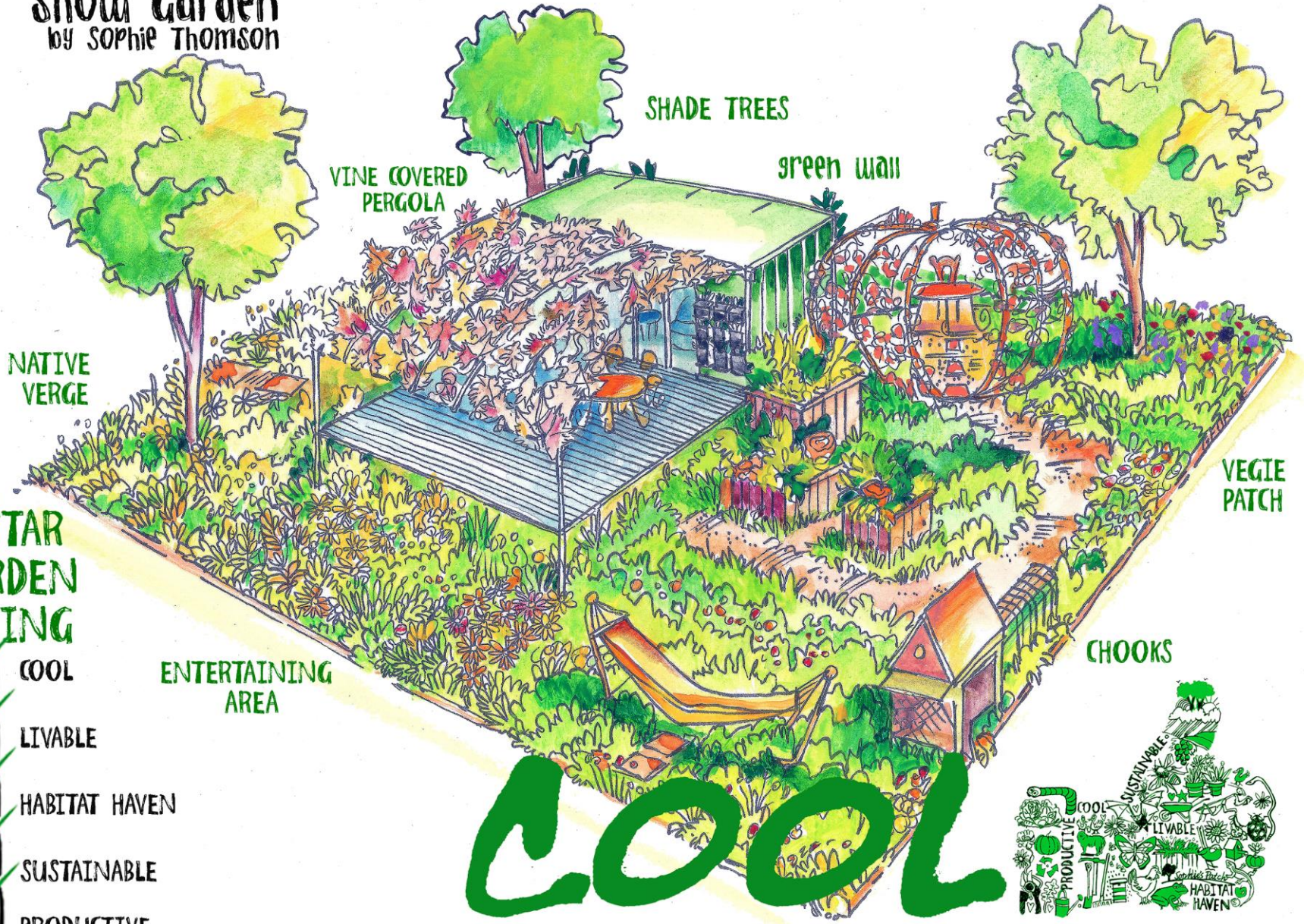


# Urban farms

## Kitchen Farm Masterplan



# 2023 ROYAL ADELAIDE SHOW Garden by Sophie Thomson



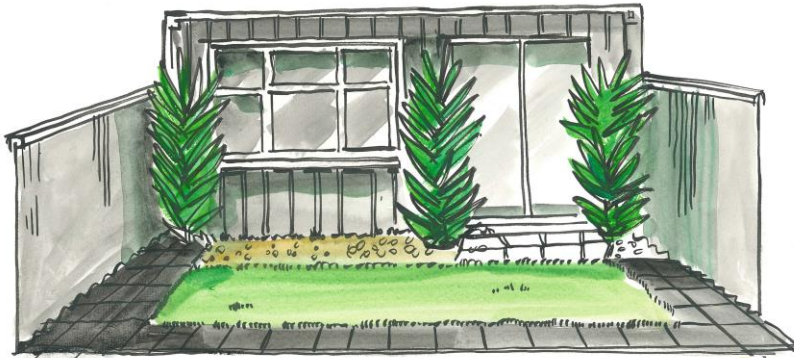
## 5 STAR GARDEN RATING

- COOL
- LIVABLE
- HABITAT HAVEN
- SUSTAINABLE
- PRODUCTIVE

# COOL

## EVERY GARDEN CAN MAKE A DIFFERENCE





**5 STAR GARDEN RATING**

- COOL
- LIVABLE
- HABITAT HAVEN
- SUSTAINABLE
- PRODUCTIVE

REAR VIEW OF  
COOL  
SHOW GARDEN









Website [www.sophiespatch.com.au](http://www.sophiespatch.com.au)

Join the mailing list for the regular newsletters

Facebook Sophie Thomson public figure

Instagram @sophiespatch

Happy gardening! 😊